

# CT1500R

## The largest flow meter and load valve system for use with HPM data loggers

Made up of two kits: CT1500 kit & HV1500 kit. The CT1500R includes a flow meter and load valve designed for use with the HPM datalogger (sold separately), creating a powerful and versatile hydraulic testing system. It can handle flow rates up to 1500 LPM (400 US GPM) and pressures up to 420 bar (6000 PSI), making it ideal for diagnosing and maintaining even the largest mobile and stationary hydraulic machinery.

The CT1500 flow block accurately measures flow, pressure and temperature.

The HV1500 loading valve gives smooth progressive pressure control allowing components such as pumps, cylinders or motors to be tested without re-plumbing the test connections.

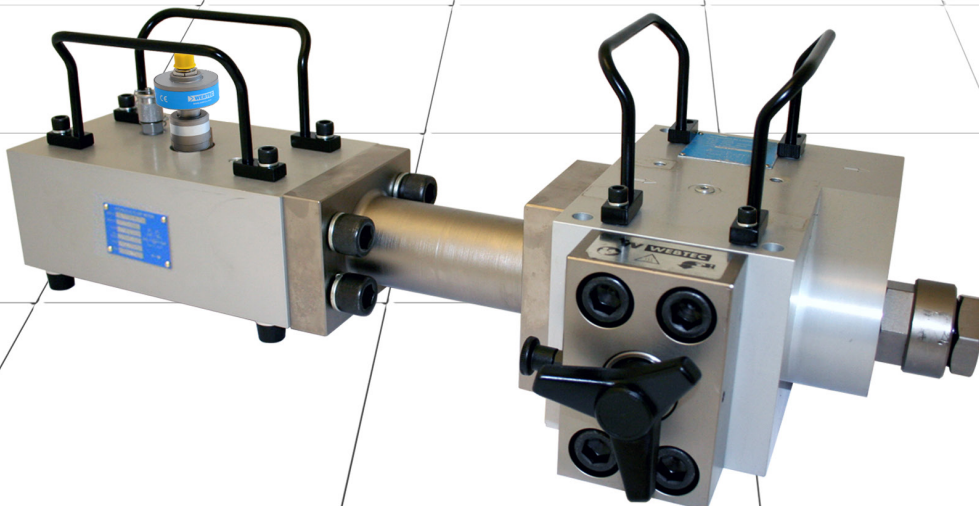
The loading valve features Webtec's unique loading valve with built-in Interpass® safety protection system and operates if maximum pressure is exceeded.

This diagnostic setup can pin point hydraulic system faults, reduce downtime and help in preventative maintenance. Please note that the HV1500 is designed for loading a system and is not suitable as a shut-off valve to hold a static load.

Make it **BLUE**®

### Features

- FAST checks on pumps, motors, valves, cylinders and hydrostatic transmissions.
- Measures flow in both directions (Note: CT1500 is uni-directional when used with HV1500 kit)
- Smooth progressive pressure control
- High tensile aluminium body rated at 420 bar (6000 psi)
- Connecting flange for use with DHCR-LT1500 kit included, with seals and bolts
- Pilot operated over pressure internal bypass valve
- Spare burst discs included
- Uni-directional
- Interpass® safety protection system, bypasses oil internally in the event of the valve being over pressurised.



## Contents CT1500

CT1500, connecting hose and cable assembly, user manuals all housed in a rugged carry case.  
Case Dimensions: 626 x 492 x 350 (24.6 x 19.4 x 13.8)

## CT1500 Specifications

<b>Maximum Rated Pressure:</b>	420 bar, 6000 psi
<b>Flow Range:</b>	50 to 1500 L/min, 12.5 to 400 US gpm
<b>Ambient Temperature Range:</b>	15 to 40 °C, 59 to 104 °F
<b>Fluid Temperature Range:</b>	15 to 90 °C, 59 to 194 °F
<b>Ambient Humidity Range:</b>	10 to 95% RH
<b>Viscosity range:</b>	10...100 cSt
<b>Compatible Fluid:</b>	Mineral oils to ISO 11158. Other fluids consult sales office.
<b>Accuracy/Tolerances:</b>	Reading 15% to 100% of flow range - 1% of indicated reading. Readings below 15% of full scale flow - fixed accuracy of 0.15% of full scale.
<b>Porting: Main Port:</b>	2" #32 SAE Code 62 4-bolt flange
<b>Top Port:</b>	7/16" -20UN #4 SAE ORB x 2
<b>Seal:</b>	FKM
<b>Weight:</b>	10 kg, 22 lb

## Construction

High tensile aluminium block houses a six blade turbine rotating on a combination axial/radial needle roller bearing and alloy steel shaft.

## Filtration

Oil cleanliness should be better than DIN ISO4406: 18/15/12 or NAS 6.

## Contents HV1500

HV1500 load valve, 2" #32 SAE Code 62 4-bolt flange Connector and fitting kit, user manual, all housed in a rugged carry case.  
Case Dimensions: 626 x 492 x 350 (24.6 x 19.4 x 13.8)

## HV1500 Specifications

<b>Maximum Rated Pressure:</b>	420 bar, 6000 psi
<b>Controllable Flow Range:</b>	100 to 1500 L/min, 26 to 400 US gpm
<b>Porting: Load Valve:</b>	2" #32 SAE Code 62 4-bolt flange
<b>Connector:</b>	2" #32 SAE Code 62 4-bolt flange
<b>Weight:</b>	28 kg, 61.6 lb
<b>Weight Inc. Case:</b>	39 kg, 86 lb

## Construction

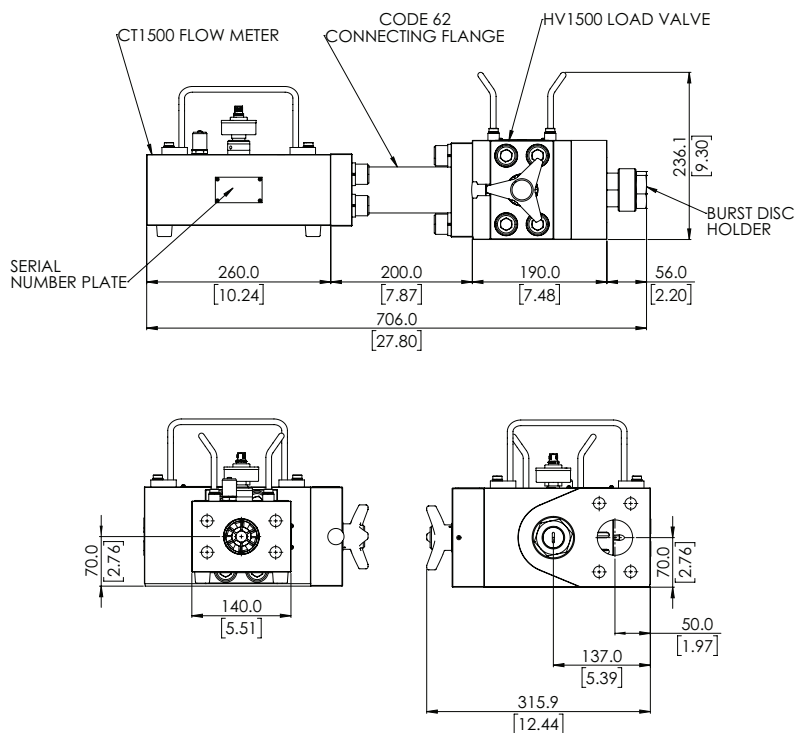
High tensile aluminium block, Steel 212A42 electroless nickel plated and alloy steel.

## Operation

The integrated loading valve gives progressive pressure loading in either direction. Replaceable safety burst discs are part of Interpass® safety protection system and operate if maximum pressure is exceeded, relieving flow to the return line. Replacement safety discs are stored in an internal holder machined.

## Installation

Dimensions in Millimetres (Inches)



Webtec® reserve the right to make improvements and changes to the specification without notice  
 Webtec®, Make it BLUE®, FlowHUB®, ViscoCorrect®, Interpass® and QuickCert® are registered trademarks of Webtec Products Limited.