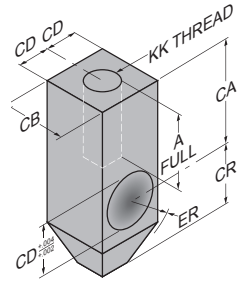
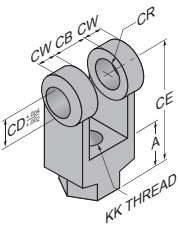


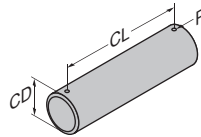
# Dimensional Data Clevis/Brackets/Pins/Rod Eyes

ROD CLEVIS													ROD EYE			
Part #	Code	Max. Load (tension) (lbs)	Thread Size	KK	A	CA	CB	CD	CE	CR	CW	ER	Part #	Code		
15-72-1001	C101	4,380	7/16-20	3/4	1 1/2	3/4	1/2	1 1/2	1/2	1/2	5/8		15-73-1001	C301		
15-72-1002	C102	12,372	3/4-16	1 1/8	2 1/16	1 1/4	3/4	2 3/8	3/4	5/8	7/8		15-73-1002	C302		
15-72-1003	C103	20,433	1-14	1 5/8	2 13/16	1 1/2	1	3 1/8	1	3/4	3/16		15-73-1003	C303		
15-72-1004	C104	30,483	1 1/4-12	2	3 7/16	2	1 3/8	4 1/8	1 3/8	1	1 9/16		15-73-1004	C304		
15-72-1005	C105	49,479	1 1/2-12	2 1/4	4	2 1/2	1 3/4	4 1/2	1 3/4	1 1/4	2		15-73-1005	C305		
15-72-1006	C106	70,095	1 7/8-12	3	5	2 1/2	2	5 1/2	2	1 1/4	2 1/2		15-73-1006	C306		
15-72-1007	C107	94,248	2 1/4-12	3 1/2	5 13/16	3	2 1/2	6 1/2	2 1/2	1 1/2	2 13/16		15-73-1007	C307		
15-72-1008	C108	121,932	2 1/2-12	3 1/2	6 1/8	3	3	6 3/4	2 3/4	1 1/2	3 1/4		15-73-1008	C308		
15-72-1009	C109	187,908	3 1/4-12	4 1/2	7 5/8	4	3 1/2	8 1/2	3 1/2	2	3 7/8		15-73-1009	C309		
15-72-1010	C110	268,026	4-12	5 1/2	9 1/8	4 1/2	4	10	4	2 1/4	4 7/16		15-73-1010	C310		



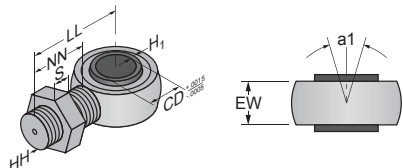
**NOTE:** The Rod Clevis and Rod Eyes are designed for use with the standard *Milwaukee Cylinder* Style No. 2 Rod End. When ordering these accessories, be sure to match the thread size of the Style No. 2 Rod End of the rod size you ordered to the thread size of the accessory you require.

PIVOT PIN				
Part #	Code	CD	CL	P
15-76-1001	P101	1/2	1 7/8	9/64
15-76-1002	P102	3/4	2 5/8	9/64
15-76-1003	P103	1	3 1/8	13/64
15-76-1004	P104	1 3/8	4 1/8	13/64
15-76-1005	P105	1 3/4	5 1/8	13/64
15-76-1006	P106	2	5 1/8	17/64
15-76-1007	P107	2 1/2	6 1/8	Groove width .086 to .091
15-76-1008	P108	3	6 3/16	Groove width .103 to .108
15-76-1009	P109	3 1/2	8 1/8	Groove width .120 to .125
15-76-1010	P110	4	9 1/8	Groove width .120 to .125



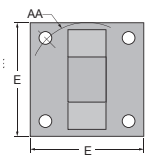
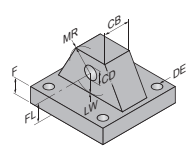
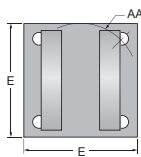
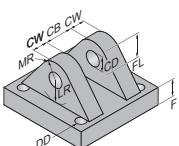
- 1) Pivot pins are furnished with clevis mounted cylinders as standard.
- 2) Pivot pins for 1 1/2" - 6" bore are furnished with cotter pins. Pivot pins for 7" thru 12" bore are furnished with snap rings.
- 3) Pivot pins are not furnished as standard and must be ordered separately for use with accessories.

SPHERICAL ROD EYE (WITH NUT)									
Part #	Max. Load (tension) (lbs)	a1	CD	EW	H <sub>1</sub>	HH	LL	NN	S
HS-302	7,020	13 1/2°	3/4	7/8	2 9/32	3/4-16	2 27/32	1 23/32	7/16
HS-303	19,050	14°	1	1 3/8	1 13/32	1-14	4 3/32	2 3/32	9/16
S-301	1,450	12°	1/2	5/8	1 1/16	7/16-20	2 7/16	1 15/32	1/4
S-302	2,880	13 1/2°	3/4	7/8	2 9/32	3/4-16	2 27/32	1 23/32	7/16
S-303	10,885	14°	1	1 3/8	1 13/32	1-14	4 3/32	2 3/32	9/16



**NOTE:** The Spherical Rod Eye is used with Style 3 and 5 rod ends.

CLEVIS BRACKET													EYE BRACKET							
Part #	Code	Max. Load (tension) (lbs)*	Max. Press. (psi)*	AA	CB	CD	CW	Thrd. Size	DD	DE	E	F	Clev. Eye	Clev. Eye	FL	LR	LW	MR	Part #	Code
15-74-2002	B122	20,082	3,000	2.9	1 1/4	3/4	5/8	1/2-20	1 7/32	3	5/8	1 7/8	1 7/8	1 7/8	1 3/16	1 1/4	3/4	15-75-2002	B422	
15-74-2003	B102	20,082	3,000	3.6	1 1/4	3/4	5/8	1/2-20	1 7/32	3 1/2	5/8	1 7/8	1 7/8	1 7/8	1 5/16	1 3/16	3/4	15-75-2003	B402	
15-74-2004	B103	27,684	3,000	4.6	1 1/2	1	3/4	5/8-18	2 1/32	4 1/2	3/4	2 1/4	2 1/4	2 1/4	1 3/8	1 3/8	1	15-75-2004	B403	
15-74-2005	B104	20,685	3,000	5.4	2	1 3/8	1	5/8-18	2 1/32	5	7/8	3	3	3	1 7/8	1 7/8	1 3/8	15-75-2005	B404	
15-74-2006	B105	55,000	3,000	7.0	2 1/2	1 3/4	1 1/4	7/8-14	2 9/32	6 1/2	7/8	1 1/8	3 1/8	3 3/8	2	2 1/32	1 5/8	15-75-2006A	B405A	
15-74-2007	B106	80,000	3,000	8.1	2 1/2	2	1 1/4	1-14	1 1/32	7 1/2	1	1 1/2	3 1/2	4	2 1/16	2 1/16	2	15-75-2007A	B406A	
15-74-2008	B107	115,000	3,000	9.3	3	2 1/2	1 1/2	1 1/8-12	1 5/32	8 1/2	1	1 3/4	4	4 3/4	2 5/8	2 21/32	2 3/8	15-75-2008A	B407A	
15-74-2009	B108	125,000	3,000	10.6	3	3	1 1/2	1 1/4-12	1 9/32	9 1/2	1	2	4 1/4	5 1/4	2 7/8	2 7/8	2 3/4	15-75-2009A	B408A	



\* Eye Bracket only. Eye Brackets with suffix letter "A" reflect revised NFPA standards for F and FL dimensions.



Series H

4-35 Series H  
Heavy Duty  
Hydraulic  
Cylinders

Series MH

36-49 Series MH  
ISO Metric  
Hydraulic  
Cylinders

Series LH

50-71 Series LH  
Low Pressure  
Hydraulic  
Cylinders

Series A

72-101 Series A  
Pneumatic  
Cylinders

Series MN

102-134 Series MN  
Aluminum  
Cylinders

Hyd-Pneu Devices

135-147 Hydraulic  
Pneumatic  
Devices

Cyl Accessories

148-153 Cylinder  
Accessories

Manipulators

154-159 Industrial  
Manipulators

Power Units/Valves

160-176 Power Units  
and Valves

Design Guide

177-193 Design  
Engineering  
Guide

*milwaukee*  
**Cylinder**

5877 S. Pennsylvania Avenue  
Cudahy, Wisconsin 53110-2456 USA



Your *Milwaukee Cylinder* Distributor



[www.webtec.com](http://www.webtec.com)