

IFC Series

Integrated Flow Control Valve

A configurable kit of parts which can be integrated into hydraulic manifold blocks to give pressure compensated flow control.

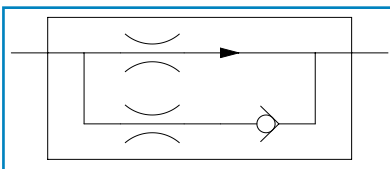
Flow control valves maintain the flow rate of hydraulic fluid to a specified value.

Applications include hydraulic cylinders required to extend or retract at constant speeds and hydraulic motors required to rotate at constant speeds. When used with a fixed delivery pump the excess flow is By-Passed across a relief valve.

Specifications

Maximum Rated Pressure:	210 bar, 3000 psi
Maximum Rated Flow:	14 L/min, 3.7 US gpm
Porting:	SAE, BSPP & NPTF
Materials: Internal Materials:	Steel and Aluminium
Seals:	NBR

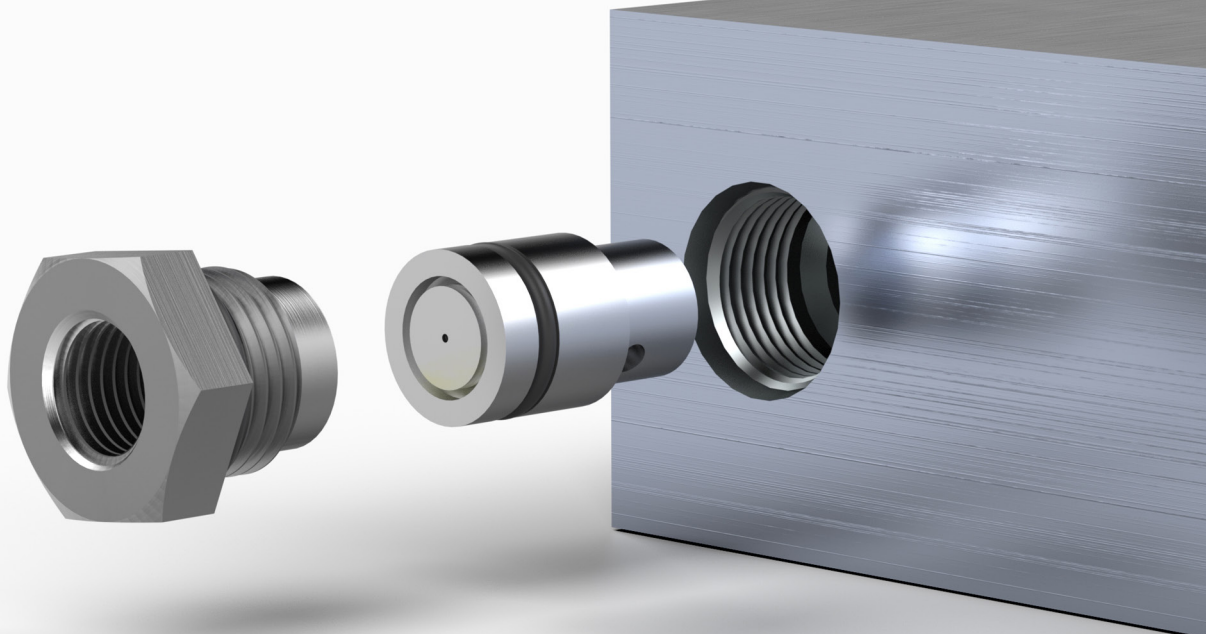
Symbol:



Make it **BLUE**

Features

- Pressure compensated to ensure a constant flow rate under varying pressures.
- Pre-set in factory to customer requirements at any flow rate between 1.5 L/min - 16 L/min, 0.5 US gpm - 4 US gpm.
- Uncontrolled flow is permitted in reverse direction.
- Optional body to configure as inline valve.
- In line flow control valve version available, ILFC series.



Step 1: Choose Part Number for Flow Size Spool

PART NUMBER	NOMINAL FLOW	
	L/min	US gpm
TSK3611-8	0.5	0.13
TSK3611-4	0.8	0.21
TSK3611-5	1.1	0.29
TSK3611-6	1.4	0.37
TSK3611-7	1.6	0.42
TSK3611-9	1.8	0.48
TSK3611	2.0	0.53
TSK3611-21	2.1	0.55
TSK3611-10	3.0	0.79
TSK3611-19	3.3	0.87
TSK3611-22	3.6	0.95
TSK3611-11	3.9	1.03
TSK3611-1	4.0	1.06
TSK3611-23	4.2	1.11
TSK3611-12	4.6	1.22
TSK3611-20	4.8	1.27
TSK3611-13	5.0	1.32
TSK3611-2	6.0	1.56
TSK3611-14	6.4	1.69
TSK3611-15	7.2	1.90
TSK3611-16	11.2	2.96
TSK3611-17	11.8	3.12
TSK3611-18	12.7	3.35



Please contact our technical sales team to discuss any special order requirements.

Step 2: Choose Part Number for Retainer

PART NUMBER	PORTING
TSK3614	1/4" BSPP
TSK6174	1/4" NPTF*
TSK6993	7/16" -20UN #4 SAE ORB



* All NPTF threads are to ANSI B1.20.3 -1976 Class 1. As stated in the standard it is recommended that "sealing is accomplished by the means of a sealant applied to the thread". NPT fittings may also be used to connect to NPTF ports (also with a sealant applied to the thread).

Step 3: Optional Body. Choose Part Number for Body**

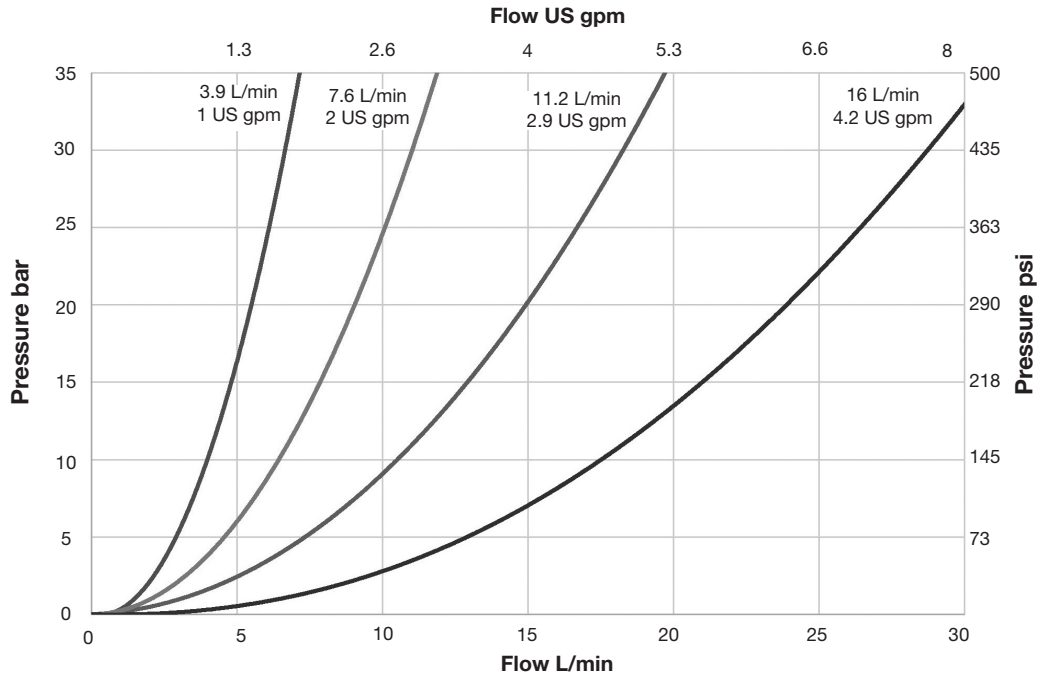
PART NUMBER	PORTING
TSK3615	1/4" BSPP
TSK6175	1/4" NPTF*
TSK6992	7/16" -20UN #4 SAE ORB



** To enable to use as an inline flow control valve.

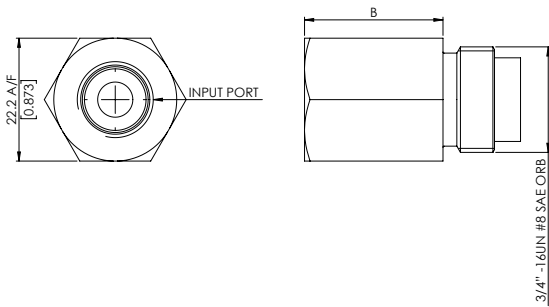
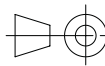
Reverse Flow Typical Pressure Drop

All tests completed using ISO32 Mineral oil at 40 degrees C (32 cSt)



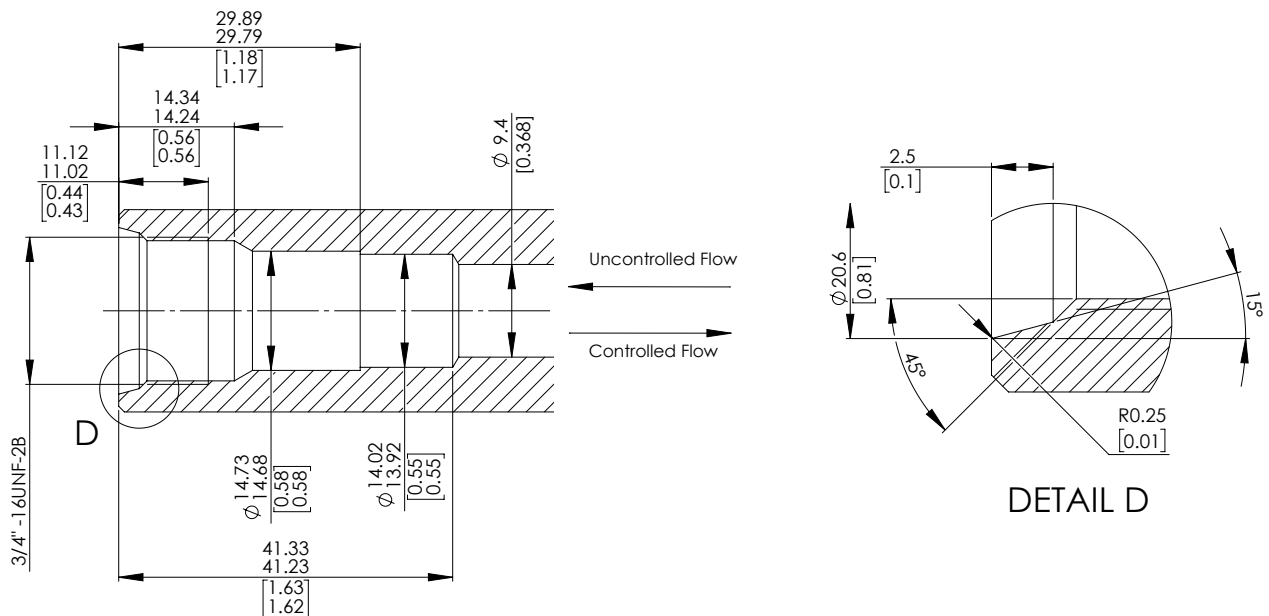
Installation Details Dimensions in mm [Inches]

Retainer Details



INPUT PORT	B	
UNITS	mm	Inch
1/4" BSPP	6.7	0.264
1/4" NPTF*	25	0.984
7/16" -20UN #4 SAE ORB	6.7	0.264

Mounting Details



Webtec reserve the right to make improvements and changes to the specification without notice