

ILFC Series

Fixed Flow Pressure Compensated Control Valve

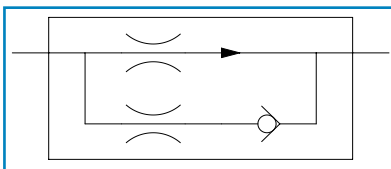
Flow Control Valves maintain the flow rate of hydraulic fluid to a specified value.

Applications include hydraulic cylinders required to extend or retract at constant speeds and hydraulic motors required to rotate at constant speeds. When used with a fixed delivery pump the excess flow is By-Passed across a relief valve.

Specifications

Maximum Rated Pressure:	210 bar, 3000 psi
Maximum Rated Flow:	16 L/min, 4 US gpm
Porting:	SAE, BSPP & NPTF
Materials: Body Materials:	Zinc Plated Steel Body
Internal Materials:	Steel and Aluminium
Seals:	NBR
Mounting:	In-line

Symbol:



Make it **BLUE**

Features

- Pressure compensated to ensure a constant flow rate under varying pressures.
- Pre-set in factory to customer requirements at any flow rate between 1.5 L/min - 16 L/min, 0.5 US gpm - 4 US gpm.
- Uncontrolled flow is permitted in reverse direction.
- Zinc plated clear passivate.
- Cartridge insert version available, without steel body.



Sales Order Code

Please contact our technical sales team to discuss any special order requirements.

TYPICAL CODE	DESCRIPTION	SEE TABLE	YOUR CODE
ILFC	In-line Flow Control	-	ILFC
16	Flow Size	Table 1	
5	Factory Present Flow*	-	
J	Porting	Table 2	

* Flow Rating in L/min

Table 1: Flow Size

CODE	FLOW RANGE	
	L/min	US gpm
14	1.5 - 14	0.5 - 3.7
16	1.5 - 16	0.5 - 4.2

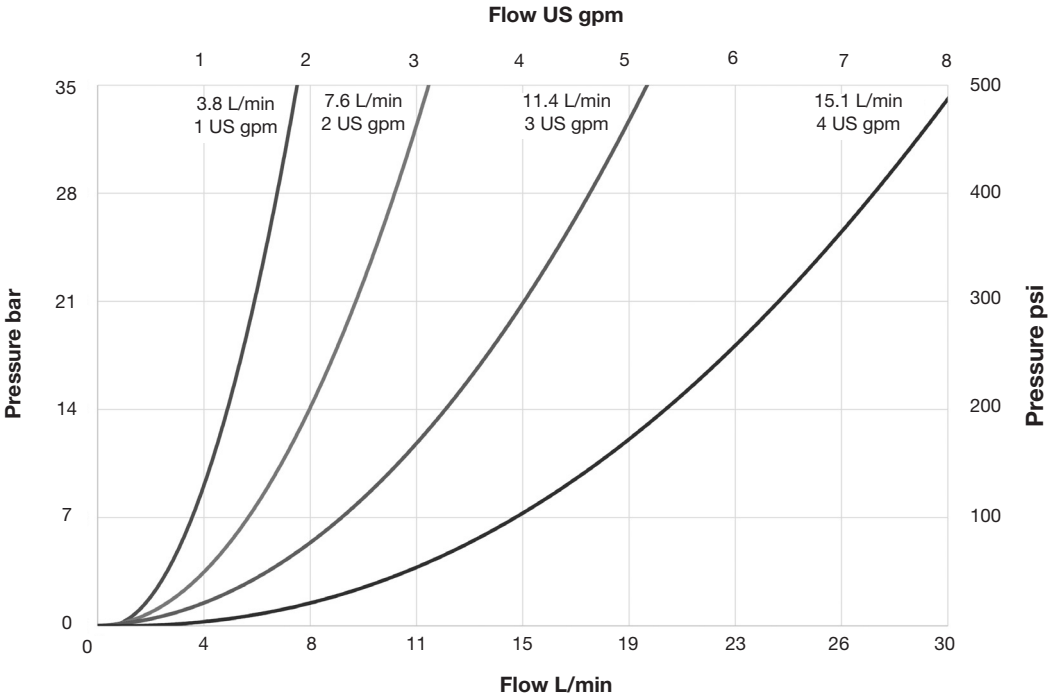
Table 2: Porting

CODE	FLOW SIZE CODE	PORTING
J	14	1/4" BSPP
	16	3/8" BSPP
A	14	1/4" NPTF**
	16	3/8" NPTF**
G	14	7/16" -20UN #4 SAE ORB
	16	9/16" -18UN #6 SAE ORB

** All NPTF threads are to ANSI B1.20.3 -1976 Class 1. As stated in the standard it is recommended that "sealing is accomplished by the means of a sealant applied to the thread". NPT fittings may also be used to connect to NPTF ports (also with a sealant applied to the thread).

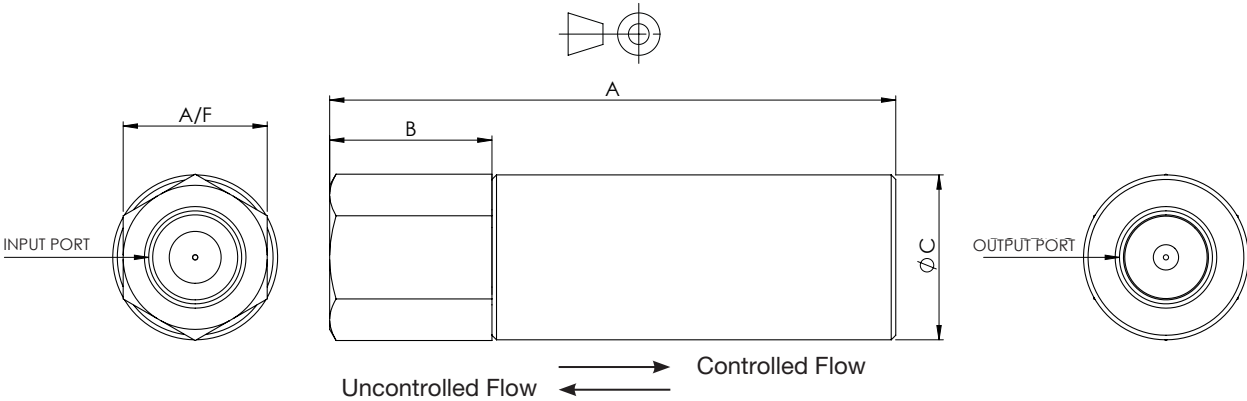
Reverse Flow Typical Pressure Drop

All tests completed using ISO32 Mineral oil at 40 degrees C (32 cSt)



Installation Details

INPUT/OUTPUT PORT UNITS	A		B		C		A/F		WEIGHT	
	mm	in	mm	in	mm	in	mm	in	kg	lb
1/4" BSPP	63.8	2.51	6.6	0.26	25.4	1.00	22.2	0.87	0.18	0.4
3/8" BSPP	77.3	3.04	20.1	0.79	25.4	1.00	22.2	0.87	0.20	0.4
1/4" NPTF	87.2	3.43	25.0	0.98	25.4	1.00	22.2	0.87	0.25	0.5
3/8" NPTF	87.2	3.43	25.0	0.98	25.4	1.00	22.2	0.87	0.22	0.5
7/16" -20UN #4 SAE ORB	63.8	2.51	6.6	0.26	25.4	1.00	22.2	0.87	0.18	0.4
9/16" -18UN #6 SAE ORB	87.2	3.43	25.0	0.98	25.4	1.00	22.2	0.87	0.24	0.5



Webtec reserve the right to make improvements and changes to the specification without notice