

# NR Series

## Non-Return Valve

**Check (Non-Return) Valves stop fluid flow in one direction while permitting free flow in the opposite direction.**

The force exerted by fluid entering the valve direction unseats a spring loaded poppet permitting fluid to pass. The fluid pressure required to unseat the poppet is known as the force in the opposite direction push the poppet against the seat thus preventing fluid passage.

### Specifications

**Maximum Pressure:** 210 bar, 3000 psi

**Cracking pressure:** 0.35 - 4.5 bar, 5 - 65 psi (see Table 3)

**Flow range:** 15 - 260 lpm, 4.0 - 68.7 US gpm (see Table 1)

**Porting:** BSP (see Table 2)

**Material:** Steel and Aluminum components in a Steel body

**Weight:** See Table 4

Milwaukee, WI 53235, USA  
Tel: +1 (414) 769-6400  
sales-us@webtec.com

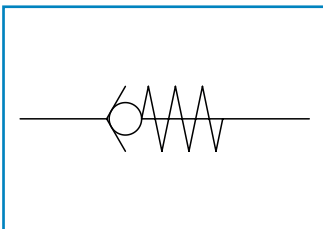
St. Ives, Cambs. PE27 3LZ, UK  
Tel: +44 (0) 1480 397 400  
sales-uk@webtec.com

[www.webtec.com](http://www.webtec.com)

### Features

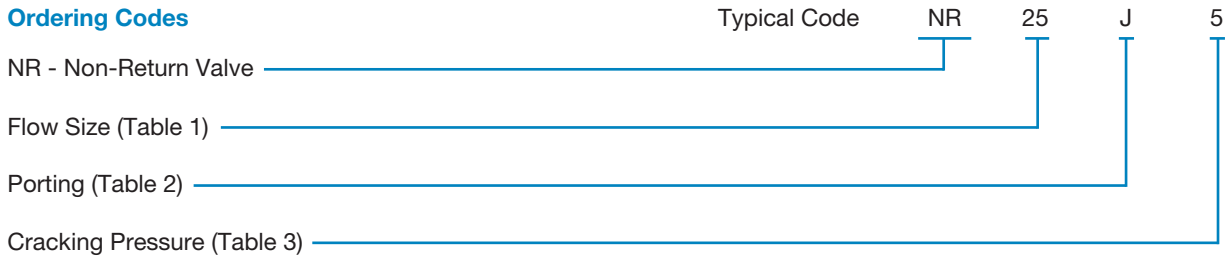
- Straight through porting allows the valve to be connected directly in-line thus making the best use of restricted space.
- Customer can select from 7 valves offering a range of flow ratings and 4 cracking pressure settings.

### Symbol



**Hydraulic measurement and control**

**Ordering Codes**



**Table 1:** Flow size

Flow Size Code	Flow (lpm)	Flow (US gpm)
25	15	4.0
37	27	7.1
50	52	13.7
75	85	22.5
100	105	27.7
125	175	46.2
150	260	68.7

**Table 2:** Porting

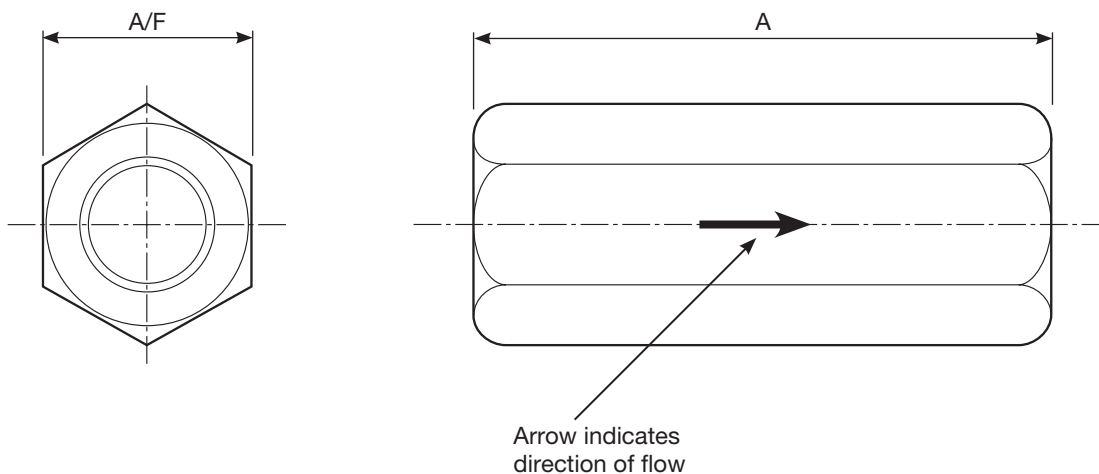
Porting Code	Flow Size Code	Porting
J	25	1/4" BSPP
	37	3/8" BSPP
	50	1/2" BSPP
	75	3/4" BSPP
	100	1" BSPP
	125	1-1/4" BSPP
	150	1-1/2" BSPP

**Table 3:** Cracking Pressure

Code	Pressure (bar)	Pressure (psi)
5	0.35	5
15	1.03	15
30	2.07	30
65	4.5	65

**Table 4:** Dimensions mm (In)

Flow Size Code	A	A/F	Weight kg (lb)
25	60 (2.36)	21.0 (0.83)	0.14 (0.3)
37	70 (2.76)	23.8 (0.94)	0.18 (0.4)
50	76 (2.99)	28.6 (1.12)	0.33 (0.7)
75	108 (4.25)	38.0 (1.50)	0.71 (1.6)
100	129 (5.08)	42.4 (1.67)	0.9 (2.0)
125	133 (5.24)	63.5 (2.50)	2.3 (5.1)
150	135 (5.31)	65.1 (2.56)	2.3 (5.1)



Other threads available to special order