

RV5

Pressure Relief Valve

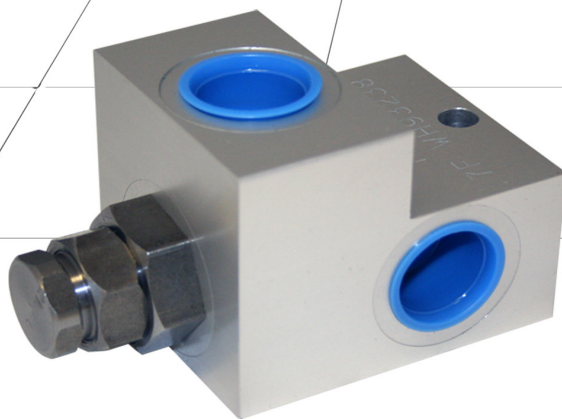
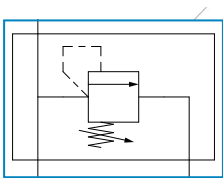
Pressure relief valves limit the maximum working pressure of a hydraulic system to a pre-determined rating thus providing protection against the overloading of system components.

Direct acting relief valves unload flow to tank when system pressure is enough to compress a spring which unseats a poppet. They provide high tolerance to contamination and are generally used for low flow rates where precise pressure control is not critical.

Specifications

Maximum Pressure:	Up to 276 bar, 4000 psi
Maximum Flow:	Up to 70 L/min, 18 US gpm
Fluid Temperature Range:	-30 to 120 °C, -22 to 248 °F
Ambient Temperature Range:	-30 to 50 °C, -22 to 122 °F
Compatible Fluids:	Mineral oils to ISO 11158. Other fluids consult sales office.
Porting:	3/4" BSPP
Materials	
Body Materials:	High Tensile Aluminium
Internal Materials:	Steel
Cartridge:	Steel
Seal:	NBR
Weight:	0.73 kg, 1.6 lb
Mounting:	One 8.7mm x 40mm, 0.343" x 1.575" Mounting Hole

Symbol:



Make it **BLUE**

Features

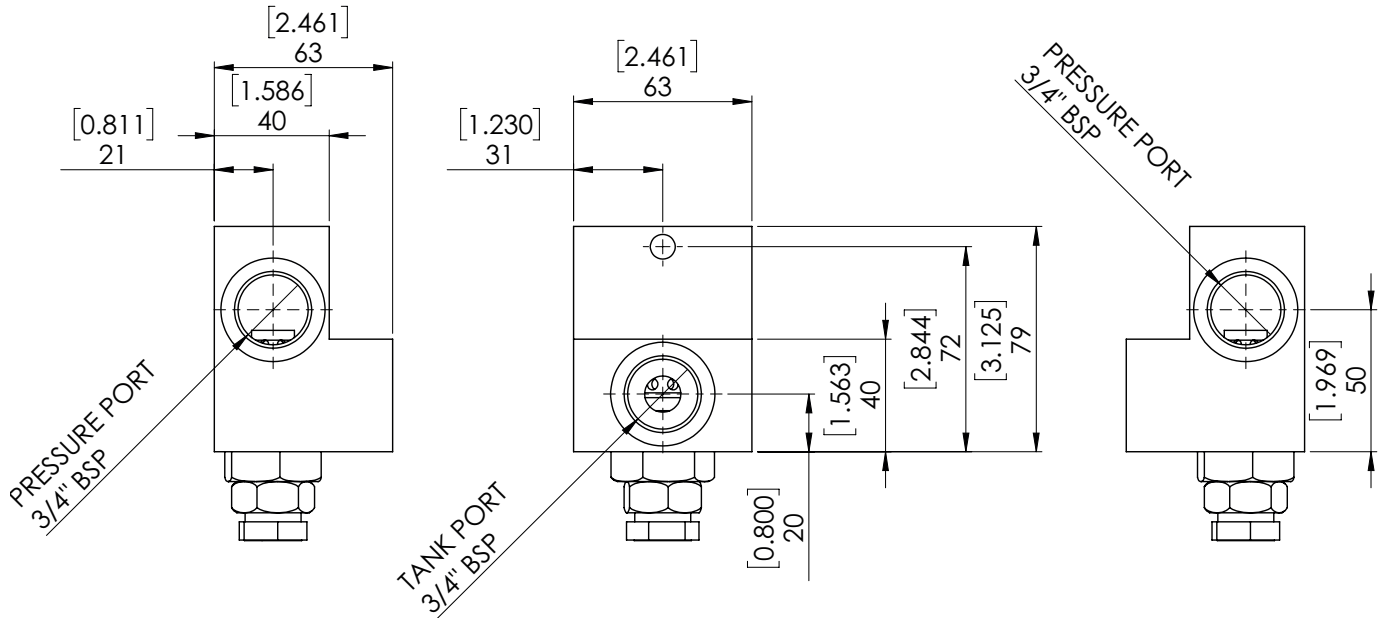
- Direct acting in-line relief valve giving high tolerance to contamination.
- Quick response provides protection against shock loads.
- Provides protection against thermal expansion of fluid.
- Flow through pressure ports enable the valve to be connected in-line with mounting versatility and convenience.

Ordering Codes

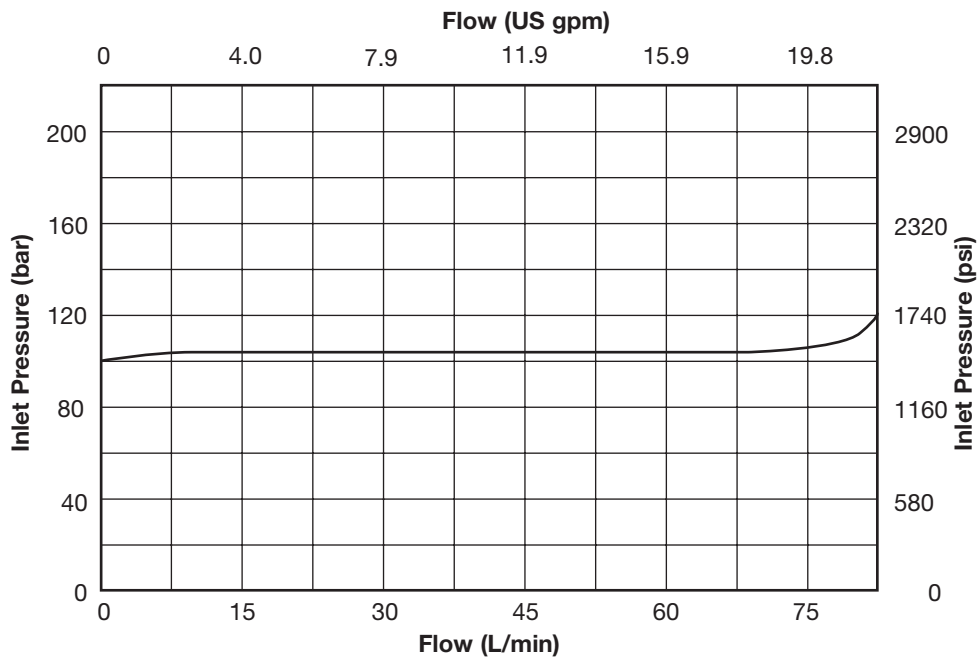
TYPICAL CODE	DESCRIPTION	YOUR CODE
RV5	Basic Valve - Valve Type	RV5
170	Pressure Setting in bar from 100 to 276 bar	

Note: When contacting sales please specify required pressure setting for valve.

Installation Details Dimensions in mm [Inches]



Typical Characteristics (at one Pressure Setting)



Test Conditions: hydraulic mineral oil viscosity of 27.4 centistokes
49 °C , 120 °F.

Webtec® reserve the right to make improvements and changes to the specification without notice
Webtec®, Make it BLUE®, FlowHUB®, ViscoCorrect®, Interpass® and QuickCert® are registered trademarks of Webtec Products Limited.