

SV80 Series

Diverter Valve

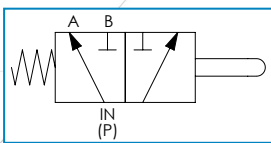
A Diverter Valve provides an alternative to the standard directional control valve when a neutral (centre) position is not required. It allows flow to be directed into either of two lines which enables fast changing from one system to another, or from one system to tank thus providing an idling circuit.

Other applications may be as a safety lock preventing accidental operation of separate functions which should not operate together and the selection of attachments as on an agricultural vehicle.

Specifications

Maximum Rated Pressure:	Up to 210 bar, 3000 psi
Maximum Rated Flow:	Up to 80 L/min, 21 US gpm
Compatible Fluids:	Mineral oils to ISO 11158. Other fluids consult sales office
Material:	Stainless Steel
Internal Material:	Cast Iron
Body Material:	Cast Iron
Porting:	BSPP, SAE
Weight:	2 kg, 4.4 lb

Symbol:
e.g A-J-S



Make it **BLUE**

Features

- Flow may be directed by mechanically pushing the spool with spring offset or by a mechanical push pull operation in which case the valve stem is threaded or fitted with a moulded knob.
- Customer can select from one of two spool types allowing flow to be diverted from one line to another or from system to tank.
- A choice of port threads are available.
- Special versions also available.

Sales Order Code

Please contact our technical sales team to discuss any special order requirements.

TYPICAL CODE	DESCRIPTION	SEE TABLE	YOUR CODE
SV80	Basic Valve	-	SV80
A	Spool Type	Table 1	
J	Porting	Table 2	
S	Operation	Table 3	

Table 1: Spool Type

CODE	SYMBOL
A	
B	

Table 2: Porting

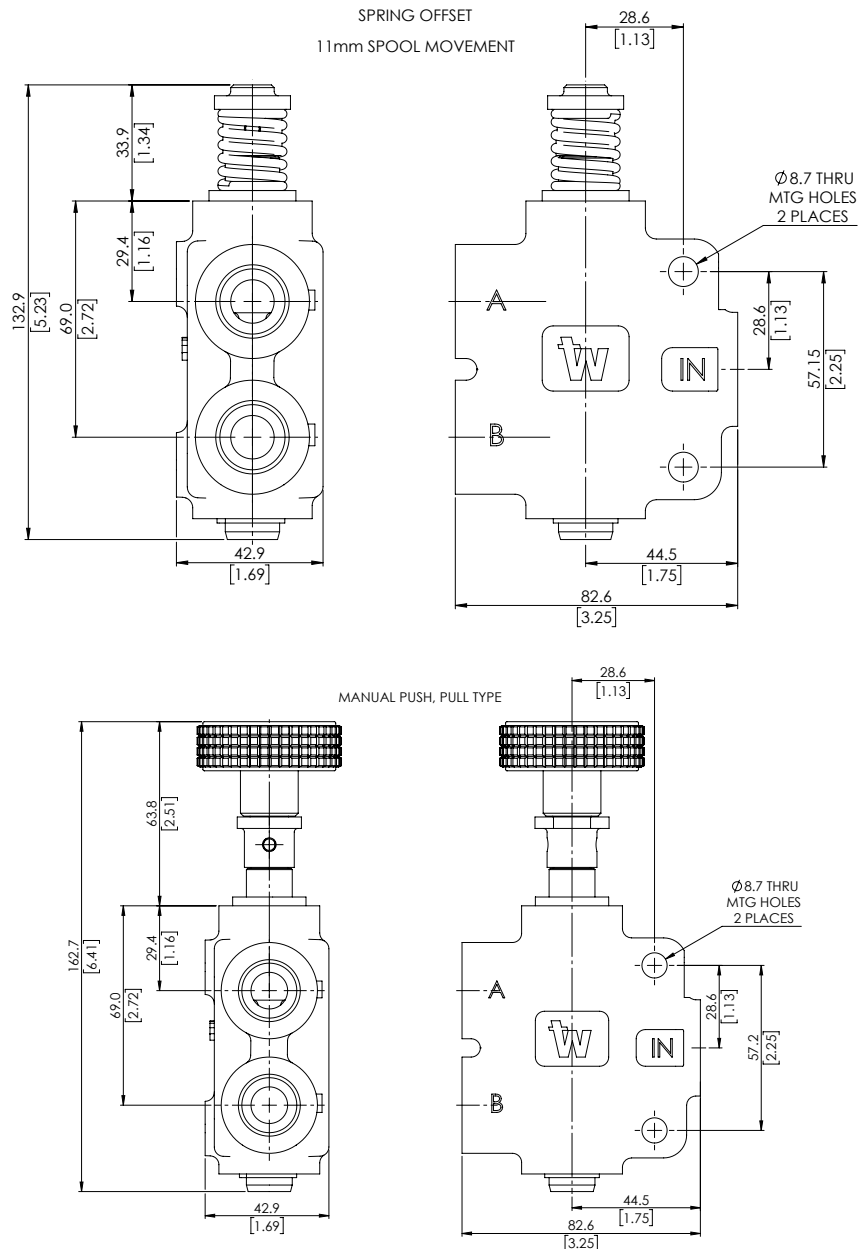
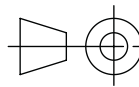
CODE	DESCRIPTION
J	1/2" BSPP
G	7/8" - 14UN #10 SAE ORB

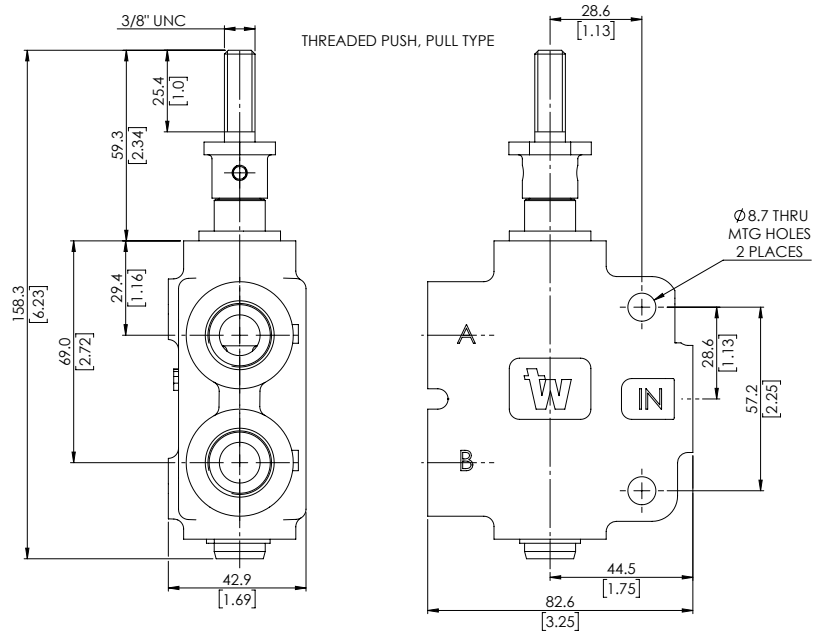
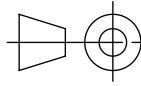
Table 3: Operation

CODE	DESCRIPTION
S	Spring Offset, Mechanical Push
M	Manual, Push - Pull
T	Threaded, Push - Pull

Installation Details Dimensions in mm [Inches]

'A' Spool - Inlet to port "A" in position shown below
 'B' Spool - All ports closed in position shown below





Webtec reserve the right to make improvements and changes to the specification without notice